

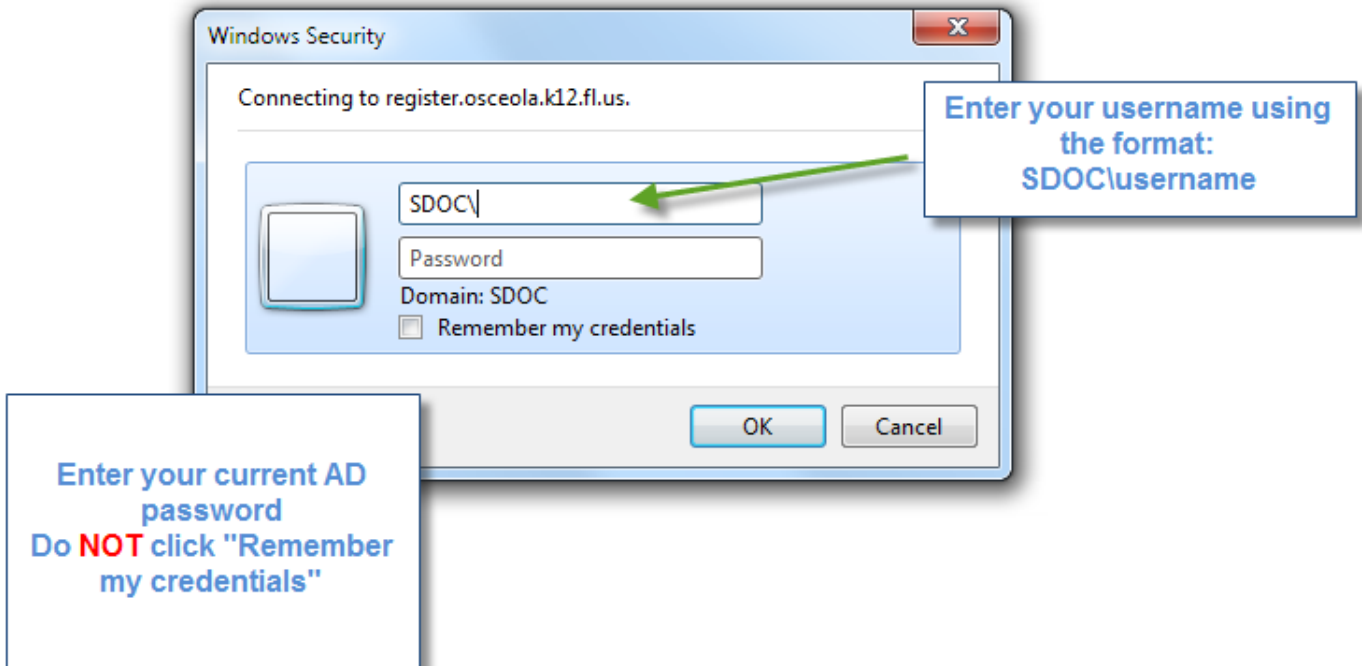
# FIM Self-Service Password Registration

Non District Sites and External Networks

Using a web browser open the site:

<https://register.osceola.k12.fl.us>

A pop-up window similar to what you see below will appear (will vary slightly depending on your browser)



Your Active Directory account must be in an enabled and in a non-expired state to register. If your password has expired, it will need to be reset before registering.

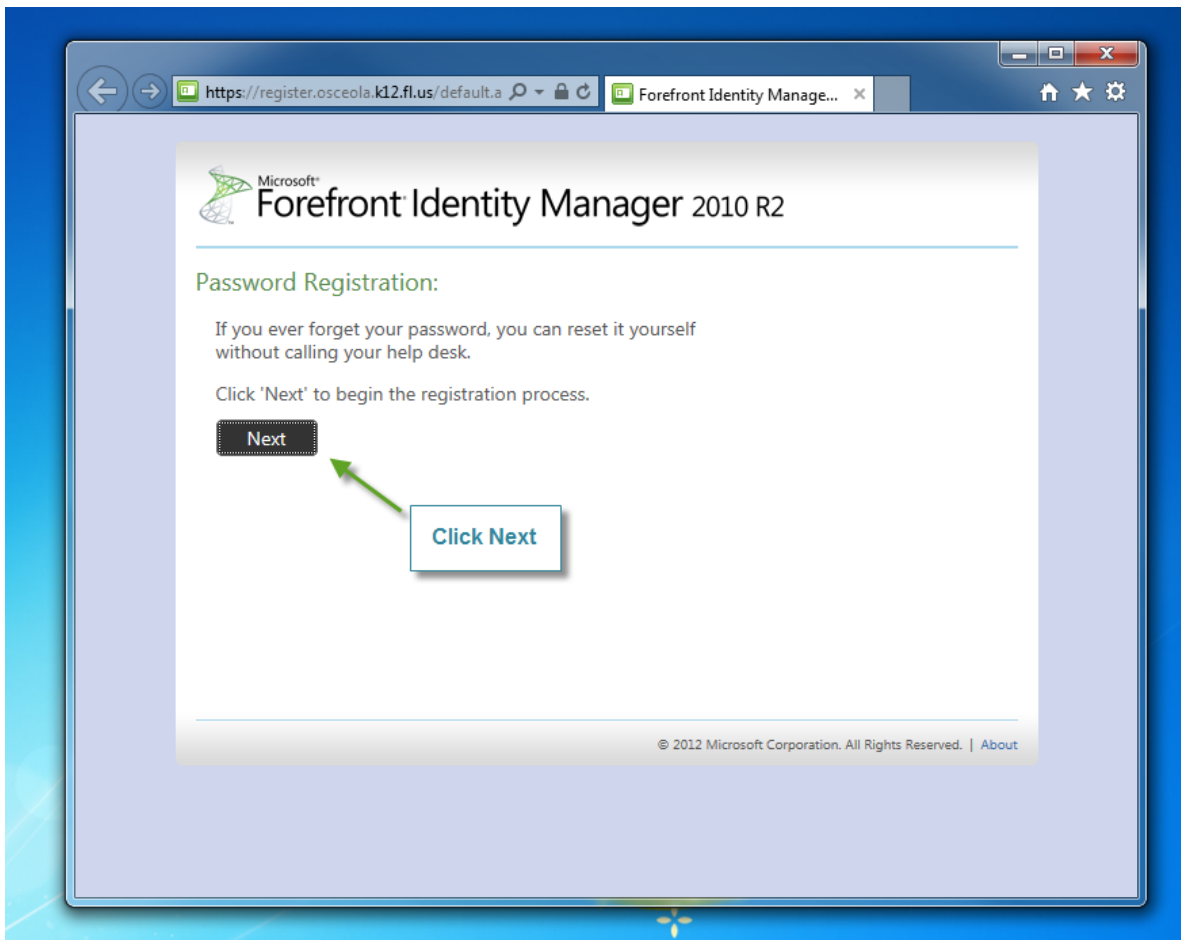
For Charter Schools:

Please check with your school administrator about obtaining your initial credentials

For District Schools:

Please have your School Tech reset your account

If neither resource is available, please contact the Help Desk at 407-870-4037



Note: The entire process must be completed within 20 minutes or the registration process will timeout.

https://register.osceola.k12.fl.us/default.aspx

Forefront Identity Manager 2010 R2

### Password Registration: Your Current Password

Enter your current password below, then click 'Next'.  
(logged in as: **SDOC\james@jia**)

Password:

**Next** **Cancel**

**Enter your current AD password and click Next**

© 2012 Microsoft Corporation. All Rights Reserved. | [About](#)

Microsoft Forefront Identity Manager 2010 R2

### Password Registration: Register Your Answers

You must answer at least 3 questions to register.

Each answer must contain at least three characters, and no two answers may be the same.

What's your mother's maiden name?

What city were you born in?

What's your favorite activity?

**Answer all 3 security questions (Note requirements highlighted)**

The responses you provide are stored by your organization in Forefront Identity Manager.

**Next** **Cancel**

© 2012 Microsoft Corporation. All Rights Reserved. | [About](#)



Microsoft®

## Forefront Identity Manager 2010 R2

---

Password Registration: Register Your Answers



Loading ...

This screen will appear and may take 10-15 seconds

© 2012 Microsoft Corporation. All Rights Reserved. | [About](#)



Microsoft®

## Forefront Identity Manager 2010 R2

---

Completed: You are now registered



If you ever need to reset your password:

1. Go to the reset password portal
2. Verify your identity
3. Choose your new password

Once you see this screen, you are registered and can close the browser

© 2012 Microsoft Corporation. All Rights Reserved. | [About](#)

This process may be repeated at any time should you need to change the answers to your questions.